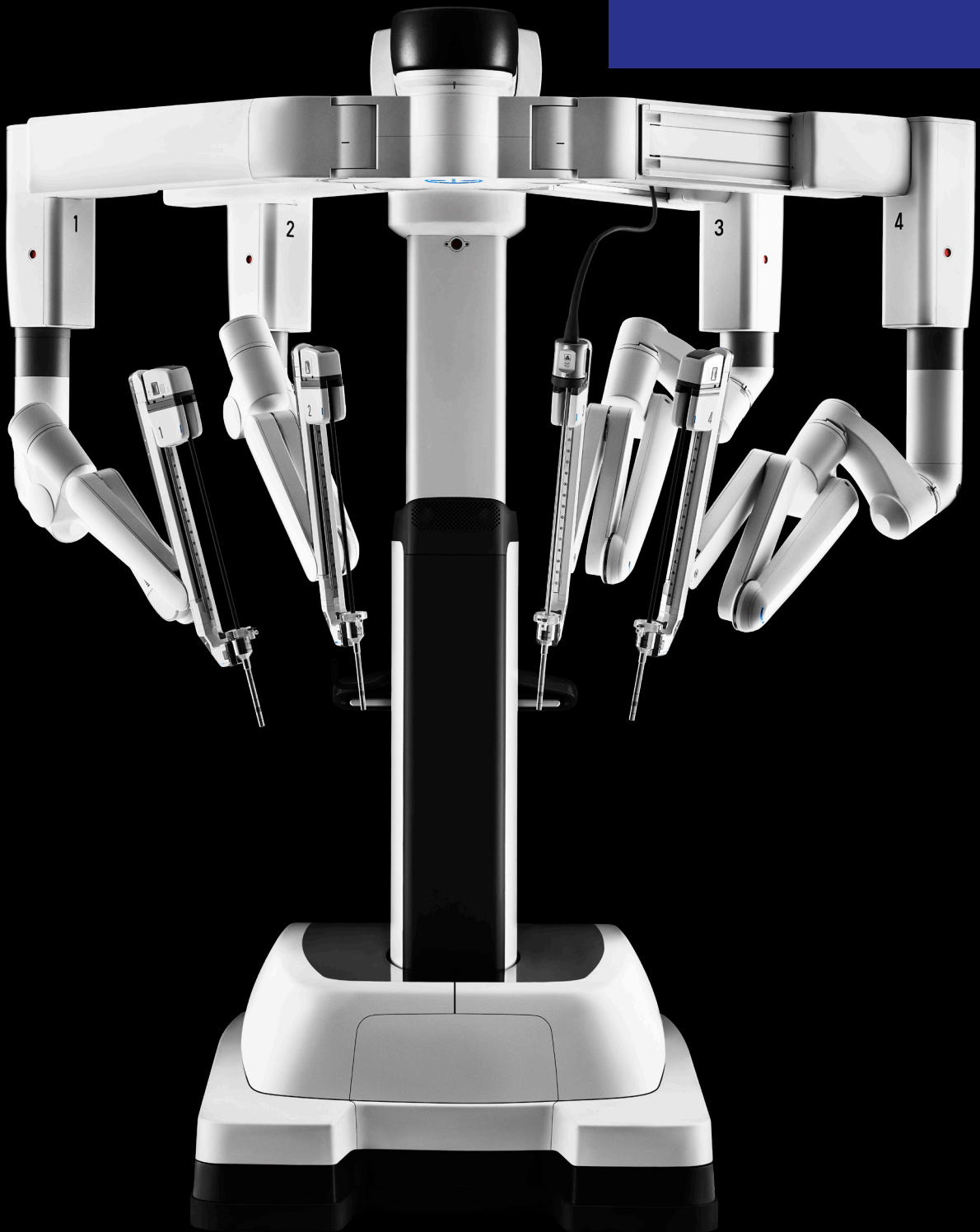


Da Vinci Xi

Define a new
standard.



INTUITIVE



Define a new standard

Designed to provide flexibility for procedures performed across your robotics program, the da Vinci Xi surgical system offers broader anatomical access, enhanced ease of use, and complete integration of the most advanced da Vinci technology¹.

This fourth-generation system includes the same advanced 3DHD vision and wristed instruments you expect of da Vinci, in a modular, adaptable format.

With a surgical system this versatile, a new standard in minimally invasive care is possible.

1. Compared to the da Vinci Si surgical system. Results of testing on file.

Transform your approach

The da Vinci Xi features boom-mounted arms with multi-position set up joints designed to help maximize the surgical workspace externally and internally. From a single cart location, staff has greater arm positioning capabilities¹, and surgeons can operate more easily across multiple quadrants¹ with the freedom to complete a wide range of minimally invasive procedures.



Pick your placement

Thinner arms and longer instruments enable simpler port placement from case to case.¹



Reach different angles

With Integrated Table Motion, you can reposition the patient without stopping the case to optimize access, exposure, and reach¹.



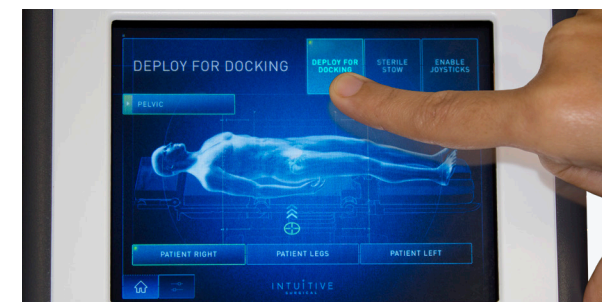
Get a different perspective

The small scope can be placed on any of the four arms during a procedure, giving you increased flexibility for visualizing the surgical site.¹

1. Compared to the da Vinci Si surgical system. Results of testing on file.

Operate with efficiency¹

Intuitive has spent thousands of hours over several decades working with surgical care teams to help streamline robotic-assisted surgery, which is why the da Vinci Xi surgical system features help to get you started quickly and streamline essential tasks.



Start simply

A unique Guided Set Up has a user interface that is clear and easy to learn, with both visual and audible cues to facilitate quick boom deployment and precise setup.



Zero in on the right approach

Drive the patient-side cart toward the surgical table using the laser cross hairs to expedite connection to the ports.



Align the arms with little effort

Insert the endoscope so that the target anatomy is in view, then simply hold the targeting button as the remaining arms move into position automatically.



Put the power in your hands

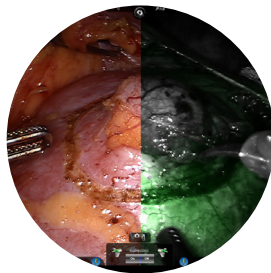
The integrated ERBE VIO dV generator helps you fine-tune energy output and switch presets directly from the surgeon console.

1. Compared to the da Vinci Si surgical system. Results of testing on file.



Access the latest da Vinci innovations

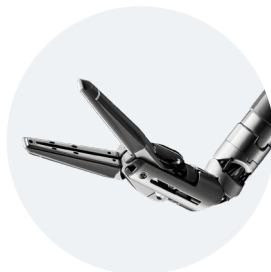
Choosing the da Vinci Xi surgical system means you can use the same instruments available for the da Vinci X, enabling you to standardize instruments for your multi-port patient carts.



See tissue in a different light
Firefly fluorescence imaging is built in to give you real-time visualization and assessment of vessels, bile ducts, and tissue perfusion.



Staple with control
Da Vinci Stapling offers a full range of lengths and reloads—30, 45, and 60 mm—as well as fully wristed articulation, complete surgeon control from the console, and software-driven feedback to help reduce guesswork.






Switch tasks quickly
With the ability to seal, cut, grasp, and dissect, Vessel Sealer Extend helps you flow seamlessly from one action to the next.



Get two grip strengths in one grasper
Force Bipolar with DualGrip technology can help streamline setup and minimize workflow disruptions by reducing instrument exchanges.

System comparison

	Da Vinci X	Da Vinci Xi	Da Vinci SP*
			
CORE TECHNOLOGY			
Da Vinci OS4 compatible	✓	✓	✓
Intuitive Motion	✓	✓	✓
EndoWrist Technology	✓	✓	✓
Immersive 3DHD Stereo Viewer	✓	✓	✓
Upgradeable Architecture	✓	✓	✓
Single Port Platform	×	×	✓
TECHNOLOGY ENHANCEMENTS¹			
Dual Console Compatible	✓	✓	×
Single-Site Technology	✓	✓	×
EndoWrist Stapler 45	✓	✓	×
Vessel Sealer Extend	✓	✓	×
Firefly Fluorescence Imaging	✓	✓	×
Multi-Port Instruments & Endoscope	✓	✓	×
Integrated Energy	✓	✓	✓
Expanded Stapling Portfolio	✓	✓	×
Platform Modularity	✓	✓	✓
EndoWrist Articulating Camera	×	×	✓
EnergyShield Monitoring	×	×	✓
CAPABILITY ENHANCEMENTS¹			
Streamlined Port Placement	✓	✓	✓
Universal Single Port Placement	×	×	✓
Extended Anatomical Access	×	✓	✓
Integrated Table Motion	×	✓	×
Boom Rotation	×	✓	✓
360° Axis Rotation	×	×	✓
Single Port Distal Triangulation	×	×	✓
EASE OF USE ENHANCEMENTS¹			
Automated Setup Tasks	×	✓	✓
Advanced Intraoperative Adjustments	×	✓	✓
Universal Cart Positioning	×	✓	✓
Optimized Patient Side Access	×	✓	✓
Elimination of Potential External Arm Collisions	×	×	✓

* The da Vinci SP surgical system is not CE Marked and cannot be placed on the market nor put into service.

1. Compared to the da Vinci Si surgical system. Results of testing on file.

Purchasing information

Da Vinci Xi system

To contact a representative or receive additional information visit:
www.intuitive.com

or
call Intuitive Surgical Customer Service:

U.S.
1.877.408.3872

Europe
+41.21.821.2020 or
+800.0821.2020

Rest of the world
1.408.523.2100

What you get

The da Vinci Xi system has three main components as standard:

1. A unique **patient cart**
2. A **surgeon console** providing an immersive, ergonomic experience
3. A **vision cart** supporting the latest 3DHD vision system



Important safety information

Serious complications may occur in any surgery, including da Vinci Surgery, up to and including death. Examples of serious or life-threatening complications, which may require prolonged and/or unexpected hospitalization and/or reoperation, include but are not limited to, one or more of the following: injury to tissues/organs, bleeding, infection and internal scarring that can cause long-lasting dysfunction/pain.

Risks specific to minimally invasive surgery, including da Vinci surgery, include but are not limited to, one or more of the following: temporary pain/nerve injury associated with positioning; a longer operative time, the need to convert to an open approach, or the need for additional or larger incision sites. Converting the procedure could result in a longer operative time, a longer time under anesthesia, and could lead to increased complications. Contraindications applicable to the use of conventional endoscopic instruments also apply to the use of all da Vinci instruments.

For Important Safety Information, indications for use, risks, full cautions and warnings, please also refer to www.intuitive.com/safety.

Individuals’ outcomes may depend on a number of factors, including but not limited to patient characteristics, disease characteristics and/or surgeon experience.

Da Vinci Surgical Systems

The Intuitive Surgical Endoscopic Instrument Control Systems (da Vinci X, da Vinci Xi and da Vinci Si Surgical Systems) are intended to assist in the accurate control of Intuitive Surgical Endoscopic Instruments during urologic surgical procedures, general laparoscopic surgical procedures, gynecologic laparoscopic surgical procedures, general thoracoscopic surgical procedures, thoracoscopically-assisted cardiotomy procedures, and trans-oral otolaryngology surgical procedures restricted to benign tumors and malignant tumors classified as T1 and T2, and for benign base of tongue resection procedures. The systems can also be employed with adjunctive mediastinotomy to perform coronary anastomosis during cardiac revascularization. The systems are indicated for adult and pediatric

use (except for trans-oral otolaryngology surgical procedures). They are intended to be used by trained physicians in an operating room environment.

The da Vinci X, da Vinci Xi and da Vinci Si Surgical Systems are class IIb medical devices CE marked (CE0543) under the European Medical Devices Directive (93/42/EEC), manufactured by Intuitive Surgical, Inc. Refer to Instructions For Use before use.

Firefly Fluorescence Imaging

The da Vinci Firefly Imaging System is intended to provide real-time endoscopic visible and near-infrared fluorescence imaging. The da Vinci Firefly Imaging System enables surgeons to perform minimally invasive surgery using standard endoscopic visible light as well as visual assessment of vessels, blood flow and related tissue perfusion, and at least one of the major extra-hepatic bile ducts (cystic duct, common bile duct or common hepatic duct), using near infrared imaging.

Table Motion

The da Vinci Table Motion is intended to allow the surgical staff to reposition the patient by adjusting the table without undocking the da Vinci Xi Surgical System during urologic surgical procedures, general laparoscopic surgical procedures, and gynecologic surgical procedures. It is designed to be used with a compatible operating room (OR) table.

Stapler Family

The EndoWrist Stapler 45 and Stapler 30 Instruments, Stapler 45 and Stapler 30 Reloads and other Stapler Accessories are intended to be used with the da Vinci X and da Vinci Xi Surgical Systems for resection, transection and/or creation of anastomoses in General, Thoracic, Gynecologic and Urologic surgery. The devices can be used with staple line or tissue buttressing material (natural or synthetic).

The EndoWrist Stapler 45 and Stapler 30 Instruments, Stapler 45 and Stapler 30 Reloads and other Stapler Accessories are class Is, IIa and IIb medical devices CE marked (CE0543) under the European Medical Devices Directive (93/42/EEC), manufactured by Intuitive Surgical, Inc. Refer to Instructions For Use before use.

SureForm Staplers

The SureForm 60 and SureForm 45, SureForm 60 and SureForm 45 Reloads are intended to be used with a compatible da Vinci Surgical System for resection, transection, and, or creation of anastomoses in General, Thoracic, Gynecologic, Urologic, and Pediatric surgery. The devices can be used with staple line or tissue buttressing material (natural or synthetic).

The SureForm 60 and SureForm 45, SureForm 60 and SureForm 45 Reloads are class IIa and IIb medical devices CE marked (CE0543) under the European Medical Devices Directive (93/42/EEC), manufactured by Intuitive Surgical, Inc. Refer to Instructions For Use before use.

Force Bipolar

The EndoWrist Force Bipolar is intended to be used with compatible systems for endoscopic manipulation of tissue, including dissection, grasping, retraction, and bipolar coagulation of tissue.

The EndoWrist Force Bipolar is a class IIb medical device CE marked (CE0543) under the European Medical Devices Directive (93/42/EEC) manufactured by Intuitive Surgical, Inc. Refer to Instructions For Use before use.

Single-Site

The Single-Site Instruments and Accessories are intended for use with the da Vinci X and da Vinci Xi Surgical Systems to enable multiple instruments in conjunction with the Single-Site Port accessory for use in single incision laparoscopic abdominal surgery.

The Single-Site Instruments and Accessories are class IIa and IIb medical devices CE0543 marked under the European Medical Device Directive (93/42/EEC), and manufactured by Intuitive Surgical, Inc. Refer to Instructions For Use before use.

Vessel Sealer Extend

The Vessel Sealer Extend is a bipolar electrosurgical sealing and cutting instruments for use with the da Vinci Xi and da Vinci X Surgical Systems and the ERBE VIO dV electrosurgical generator. It is intended for grasping and blunt dissection of tissue and for bipolar

coagulation and mechanical transection of vessels up to 7 mm in diameter and tissue bundles that fit in the jaws of the instrument. The Vessel Sealer Extend has not been shown to be effective for tubal sterilization or tubal coagulation for sterilization procedures, and should not be used for these procedures.

The Vessel Sealer Extend is class IIb medical devices CE marked (CE0543) under the European Medical Devices Directive (93/42/EEC), manufactured by Intuitive Surgical, Inc. Refer to Instructions For Use before use.

ERBE VIO dV

The ERBE VIO dV with Accessories electrosurgical unit is intended to deliver High Frequency (HF) current for the cutting and/or coagulation of tissue.

The ERBE VIO dV is a class IIb medical device CE marked (CE 0124) under the European Medical Devices Directive (93/42/EEC) manufactured by ERBE Elektromedizin GmbH. Refer to Instructions For Use before use.

Da Vinci SP Surgical System

The da Vinci SP surgical system is not CE Marked and cannot be placed on the market nor put into service.

Unless otherwise noted, all people depicted are models.

©2019 Intuitive Surgical, Inc. All rights reserved. Product and brand names/logos are trademarks or registered trademarks of Intuitive Surgical or their respective owner. See www.intuitive.com/trademarks.

PN1064693-EURa RevA 11/2019

References

- 1. Compared to the da Vinci Si surgical system. Results of testing on file.

INTUITIVE

